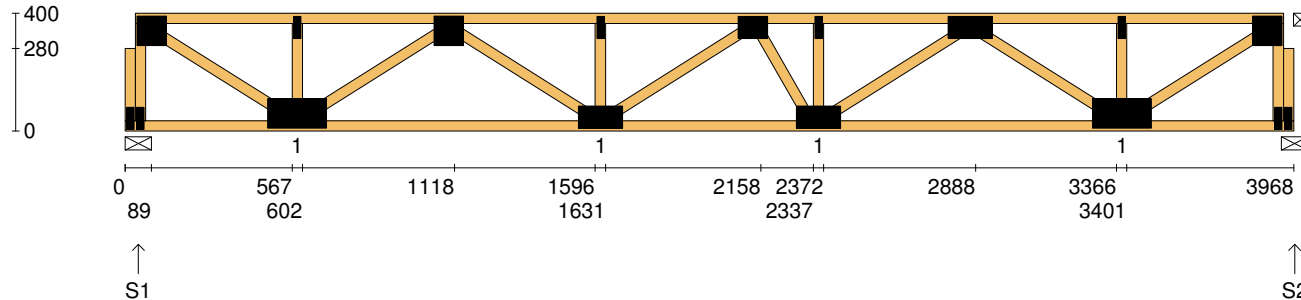


Client: D'ANDREA	Trusstech SA Pty Ltd 16 High St., Dry Creek, SA 5094	Job No: TT02365
Site: 50-52 WINDSOR ST MAGILL SA 5072 AUS		Weight: 25.29 kg
Ref: DWLG 6	Joist Name: FJ1 Type: SJ 400 Joists: FJ1, FJ20	Total Weight: 50.59 kg
		Laminations: 1



TIMBER / PLATES


Member	Size	Plating	Restraint
BC1	90x35-MGP10 H0 ADS	JD5	600
LBlock1	90x35-MGP10 H0 ADS	JD5	
LEW1	90x35-MGP10 H0 ADS	JD5	
TC1	90x35-MGP10 H0 ADS	JD5	300
W1	90x35-MGP10 H0 ADS	JD5	
W2	90x35-MGP10 H0 ADS	JD5	
W3	90x35-MGP10 H0 ADS	JD5	
W4	90x35-MGP10 H0 ADS	JD5	
W5	90x35-MGP10 H0 ADS	JD5	
W6	90x35-MGP10 H0 ADS	JD5	
W7	90x35-MGP10 H0 ADS	JD5	
W8	90x35-MGP10 H0 ADS	JD5	
W9	90x35-MGP10 H0 ADS	JD5	

- 5 more members were not shown -

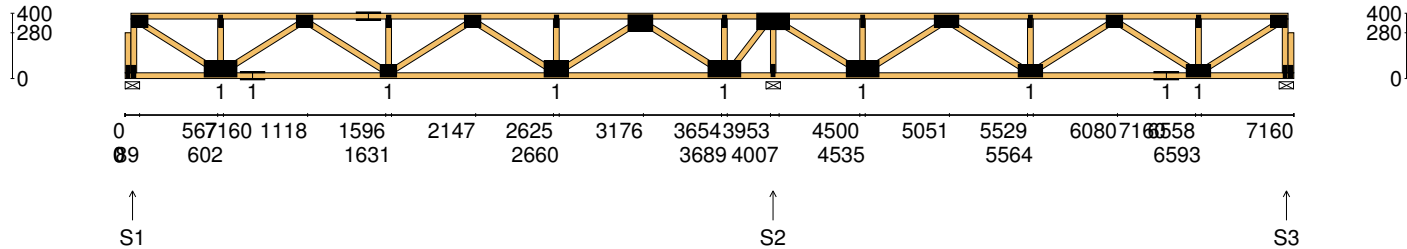
Vertical Reactions at Supports

	S1	S2
1.35DL (kN)	0.65	0.65
1.2DL + 1.5LL (kN)	3.18	3.18

Joint	Nail Plate	Joint	Nail Plate
BL1-1	25x75-MN	T8	25x75-MN
T1	100x100-MN	BR1	25x75-MN
BL1	25x75-MN	T9	100x100-MN
B1	100x200-MN	BR1-1	25x75-MN
T2	25x75-MN		
T3	100x100-MN		
B2	75x150-MN		
T4	25x75-MN		
T5	75x100-MN		
B3	75x150-MN		
T6	25x75-MN		
T7	75x150-MN		
B4	100x200-MN		

Span: 3968	Floor Material: Particle (15.4 kg/m²)	Application: General Areas	All dimensions in millimetres. This drawing should be read in conjunction with Multinail Technical sheets. Wall plates must be placed at supports only.	016020 (TN-016-020)
Overhang: 0/0	Floor Covering: Std Carpet + Underlay (8 kg/m²)	Live Load: 1.5 kPa		Ver: Floor 1.9.4
Spacing: 600	Ceiling Material: Plaster 10mm Supa Span (8.2 kg/m²)	Point Load: 1.8 kN		Date: 5/12/2018
Quantity: 2	Ceiling Fixing: Metal direct @ 600c	Design: AS 1720.1-2010		Page: 1 of 24

Client: D'ANDREA	Trusstech SA Pty Ltd 16 High St., Dry Creek, SA 5094	Job No: TT02365
Site: 50-52 WINDSOR ST MAGILL SA 5072 AUS		Weight: 44.94 kg
Ref: DWLG 6	Joist Name: FJ2 Type: SJ 400 Joists: FJ2, FJ3, FJ4, FJ5	Total Weight: 179.76 kg
		Laminations: 1



TIMBER / PLATES

Member	Size	Plating	Restraint
BC1	90x35-MGP10 H0 ADS	JD5	600
LBlock1	90x35-MGP10 H0 ADS	JD5	
LEW1	90x35-MGP10 H0 ADS	JD5	
TC1	90x35-MGP10 H0 ADS	JD5	300
W1	90x35-MGP10 H0 ADS	JD5	
W2	90x35-MGP10 H0 ADS	JD5	
W3	90x35-MGP10 H0 ADS	JD5	
BC2	90x35-MGP10 H0 ADS	JD5	600
W4	90x35-MGP10 H0 ADS	JD5	
TC2	90x35-MGP10 H0 ADS	JD5	300
W5	90x35-MGP10 H0 ADS	JD5	
W6	90x35-MGP10 H0 ADS	JD5	
W7	90x35-MGP10 H0 ADS	JD5	


- 18 more members were not shown -

Vertical Reactions at Supports

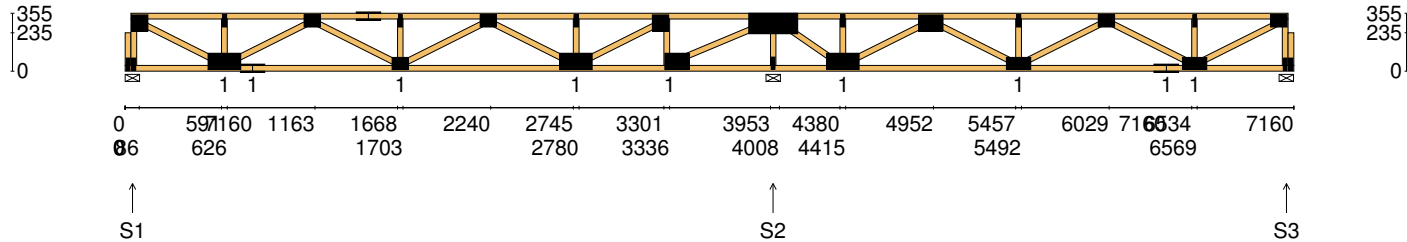
	S1	S2	S3
1.35DL (kN)	0.53	1.45	0.37
1.2DL + 1.5LL (kN)	2.60	7.21	1.80

Joint	Nail Plate	Joint	Nail Plate
BL1-1	25x75-MN	T8	100x150-MN
T1	75x100-MN	B5	100x200-MN
BL1	25x75-MN	T9	25x75-MN
B1	100x200-MN	T10	100x200-MN
T2	25x75-MN	B6	25x75-MN
B2	75x150-MN	B7	100x200-MN
T3	75x100-MN	T11	25x75-MN
T4	75x150-MN	T12	75x150-MN
B3	75x100-MN	B8	75x150-MN
T5	25x75-MN	T13	25x75-MN
T6	75x100-MN	T14	75x100-MN
B4	100x150-MN	B9	75x150-MN
T7	25x75-MN	BR1-1	25x75-MN

- 4 more nail plates were not shown -

Span: 7160	Floor Material: Particle (15.4 kg/m²)	Application: General Areas	All dimensions in millimetres. This drawing should be read in conjunction with Multinail Technical sheets. Wall plates must be placed at supports only.	016020 (TN-016-020)
Overhang: 0/0	Floor Covering: Std Carpet + Underlay (8 kg/m²)	Live Load: 1.5 kPa		Ver: Floor 1.9.4
Spacing: 600	Ceiling Material: Plaster 10mm Supa Span (8.2 kg/m²)	Point Load: 1.8 kN		Date: 5/12/2018
Quantity: 4	Ceiling Fixing: Metal direct @ 600c	Design: AS 1720.1-2010		Page: 2 of 24

Client: D'ANDREA	Trusstech SA Pty Ltd 16 High St., Dry Creek, SA 5094	Job No: TT02365
Site: 50-52 WINDSOR ST MAGILL SA 5072 AUS		Weight: 43.72 kg
Ref: DWLG 6	Joist Name: FJ3 Type: SJ 355 Joists: FJ6	Total Weight: 43.72 kg
		Laminations: 1



TIMBER / PLATES

Member	Size	Plating	Restraint
BC1	90x35-MGP10 H0 ADS	JD5	600
LBlock1	90x35-MGP10 H0 ADS	JD5	
LEW1	90x35-MGP10 H0 ADS	JD5	
TC1	90x35-MGP10 H0 ADS	JD5	300
W1	90x35-MGP10 H0 ADS	JD5	
W2	90x35-MGP10 H0 ADS	JD5	
W3	90x35-MGP10 H0 ADS	JD5	
BC2	90x35-MGP10 H0 ADS	JD5	600
W4	90x35-MGP10 H0 ADS	JD5	
TC2	90x35-MGP10 H0 ADS	JD5	300
W5	90x35-MGP10 H0 ADS	JD5	
W6	90x35-MGP10 H0 ADS	JD5	
W7	90x35-MGP10 H0 ADS	JD5	


- 17 more members were not shown -

Vertical Reactions at Supports

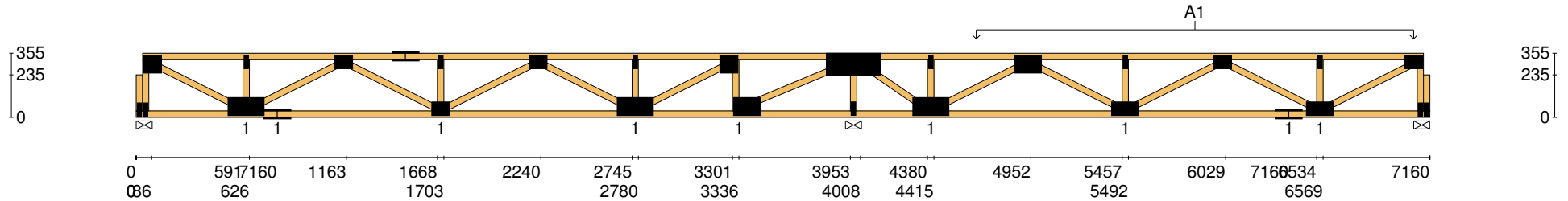
	S1	S2	S3
1.35DL (kN)	0.50	1.72	0.68
1.2DL + 1.5LL (kN)	2.57	7.45	2.07

Joint	Nail Plate	Joint	Nail Plate
BL1-1	25x75-MN	T8	100x100-MN
T1	100x100-MN	B5	100x150-MN
BL1	25x75-MN	T9	125x300-MN
B1	100x200-MN	B6	25x75-MN
T2	25x75-MN	B7	100x200-MN
B2	75x150-MN	T10	25x75-MN
T3	75x100-MN	T11	100x150-MN
T4	75x150-MN	B8	75x150-MN
B3	75x100-MN	T12	25x75-MN
T5	25x75-MN	T13	75x100-MN
T6	75x100-MN	B9	75x150-MN
B4	100x200-MN	B10	75x150-MN
T7	25x75-MN	BR1-1	25x75-MN

- 3 more nail plates were not shown -


Span: 7160	Floor Material: Particle (15.4 kg/m²)	Application: General Areas	All dimensions in millimetres. This drawing should be read in conjunction with Multinail Technical sheets. Wall plates must be placed at supports only.	016020 (TN-016-020)
Overhang: 0/0	Floor Covering: Std Carpet + Underlay (8 kg/m²)	Live Load: 1.5 kPa		Ver: Floor 1.9.4
Spacing: 600	Ceiling Material: Plaster 10mm Supa Span (8.2 kg/m²)	Point Load: 1.8 kN		Date: 5/12/2018
Quantity: 1	Ceiling Fixing: Metal direct @ 600c	Design: AS 1720.1-2010		Page: 3 of 24

Client: D'ANDREA	Trusstech SA Pty Ltd 16 High St., Dry Creek, SA 5094	Job No: TT02365
Site: 50-52 WINDSOR ST MAGILL SA 5072 AUS		Weight: 43.72 kg
Ref: DWLG 6	Joist Name: FJ3 Type: SJ 355 Joists: FJ6	Total Weight: 43.72 kg
		Laminations: 1

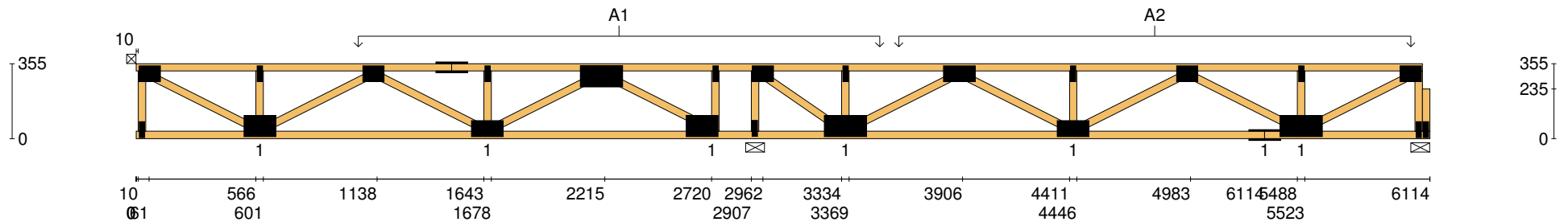


User Def. Load	A1 53.00 kg/m ² WET AREA
-----------------------	---

Applied Load	
DL (kN)	
LL (kN)	
WL Up (kN)	
WL Dn (kN)	


Span: 7160	Floor Material: Particle (15.4 kg/m²)	Application: General Areas	All dimensions in millimetres. This drawing should be read in conjunction with Multinail Technical sheets. Wall plates must be placed at supports only.	016020 (TN-016-020)
Overhang: 0/0	Floor Covering: Std Carpet + Underlay (8 kg/m²)	Live Load: 1.5 kPa		Ver: Floor 1.9.4
Spacing: 600	Ceiling Material: Plaster 10mm Supa Span (8.2 kg/m²)	Point Load: 1.8 kN		Date: 5/12/2018
Quantity: 1	Ceiling Fixing: Metal direct @ 600c	Design: AS 1720.1-2010		Page: 4 of 24

Client: D'ANDREA	Trusstech SA Pty Ltd 16 High St., Dry Creek, SA 5094	Job No: TT02365
Site: 50-52 WINDSOR ST MAGILL SA 5072 AUS		Weight: 38.66 kg
Ref: DWLG 6	Joist Name: FJ4 Type: SJ 355 Joists: FJ7, FJ8	Total Weight: 77.33 kg
		Laminations: 1

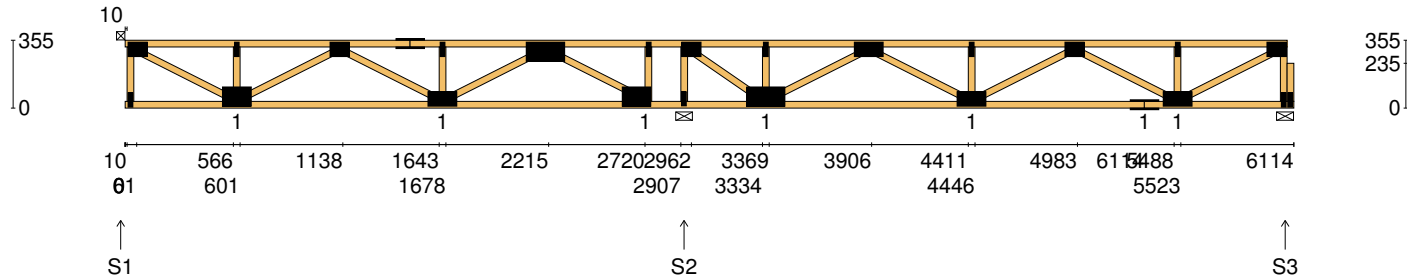


User Def. Load	A1	A2
	189.17 kg/m ²	53.00 kg/m ²
	WET AREA	WET AREA

Applied Load	
DL	(kN)
LL	(kN)
WL Up	(kN)
WL Dn	(kN)

Span:	6114	Floor Material:	Particle (15.4 kg/m²)	Application:	General Areas	All dimensions in millimetres. This drawing should be read in conjunction with Multinail Technical sheets. Wall plates must be placed at supports only.	016020 (TN-016-020)
Overhang:	0/0	Floor Covering:	Std Carpet + Underlay (8 kg/m²)	Live Load:	1.5 kPa		Ver: Floor 1.9.4
Spacing:	600	Ceiling Material:	Plaster 10mm Supa Span (8.2 kg/m²)	Point Load:	1.8 kN		Date: 5/12/2018
Quantity:	2	Ceiling Fixing:	Metal direct @ 600c	Design:	AS 1720.1-2010		Page: 6 of 24

Client: D'ANDREA	Trusstech SA Pty Ltd 16 High St., Dry Creek, SA 5094	Job No: TT02365
Site: 50-52 WINDSOR ST MAGILL SA 5072 AUS		Weight: 36.61 kg
Ref: DWLG 6	Joist Name: FJ5 Type: SJ 355 Joists: FJ9, FJ10	Total Weight: 73.22 kg
		Laminations: 1



TIMBER / PLATES


Member	Size	Plating	Restraint
BC1	90x35-MGP10 H0 ADS	JD5	600
TC1	90x35-MGP10 H0 ADS	JD5	300
LEW1	90x35-MGP10 H0 ADS	JD5	
W1	90x35-MGP10 H0 ADS	JD5	
W2	90x35-MGP10 H0 ADS	JD5	
W3	90x35-MGP10 H0 ADS	JD5	
W4	90x35-MGP10 H0 ADS	JD5	
TC2	90x35-MGP10 H0 ADS	JD5	300
W5	90x35-MGP10 H0 ADS	JD5	
W6	90x35-MGP10 H0 ADS	JD5	
W7	90x35-MGP10 H0 ADS	JD5	
W8	90x35-MGP10 H0 ADS	JD5	
W9	90x35-MGP10 H0 ADS	JD5	

- 12 more members were not shown -

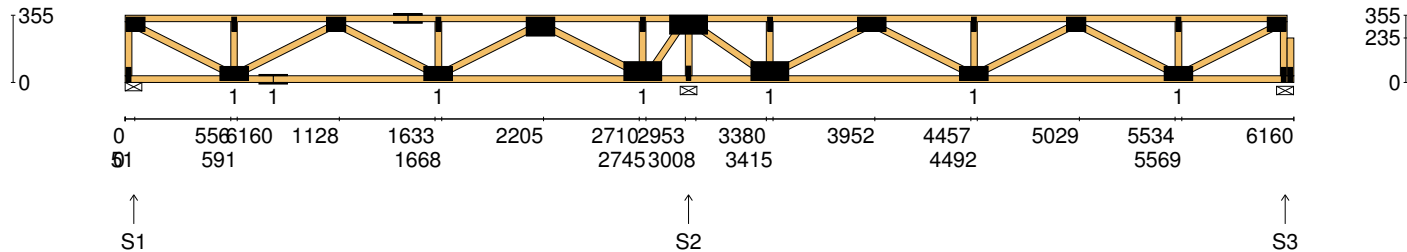
Vertical Reactions at Supports

	S1	S2	S3
1.35DL (kN)	0.58	1.91	0.43
1.2DL + 1.5LL (kN)	2.25	7.15	2.13

Joint	Nail Plate	Joint	Nail Plate
T1	75x100-MN	B5	100x200-MN
BL1	25x75-MN	T9	25x75-MN
B1	100x150-MN	T10	75x150-MN
T2	25x75-MN	B6	75x150-MN
T3	75x100-MN	T11	25x75-MN
T4	75x150-MN	T12	75x100-MN
B2	75x150-MN	B7	75x150-MN
T5	25x75-MN	B8	75x150-MN
T6	100x200-MN	T13	25x75-MN
B3	100x150-MN	BR1	25x75-MN
T7	25x75-MN	T14	75x100-MN
T8	75x100-MN	BR1-1	25x75-MN
B4	25x75-MN		

Span: 6114	Floor Material: Particle (15.4 kg/m²)	Application: General Areas	All dimensions in millimetres. This drawing should be read in conjunction with Multinail Technical sheets. Wall plates must be placed at supports only.	016020 (TN-016-020)
Overhang: 0/0	Floor Covering: Std Carpet + Underlay (8 kg/m²)	Live Load: 1.5 kPa		Ver: Floor 1.9.4
Spacing: 600	Ceiling Material: Plaster 10mm Supa Span (8.2 kg/m²)	Point Load: 1.8 kN		Date: 5/12/2018
Quantity: 2	Ceiling Fixing: Metal direct @ 600c	Design: AS 1720.1-2010		Page: 7 of 24

Client: D'ANDREA	Trusstech SA Pty Ltd 16 High St., Dry Creek, SA 5094	Job No: TT02365
Site: 50-52 WINDSOR ST MAGILL SA 5072 AUS		Weight: 37.40 kg
Ref: DWLG 6	Joist Name: FJ6 Type: SJ 355 Joists: FJ11	Total Weight: 37.40 kg
		Laminations: 1



TIMBER / PLATES


Member	Size	Plating	Restraint
BC1	90x35-MGP10 H0 ADS	JD5	600
LEW1	90x35-MGP10 H0 ADS	JD5	
TC1	90x35-MGP10 H0 ADS	JD5	300
W1	90x35-MGP10 H0 ADS	JD5	
W2	90x35-MGP10 H0 ADS	JD5	
W3	90x35-MGP10 H0 ADS	JD5	
BC2	90x35-MGP10 H0 ADS	JD5	600
W4	90x35-MGP10 H0 ADS	JD5	
TC2	90x35-MGP10 H0 ADS	JD5	300
W5	90x35-MGP10 H0 ADS	JD5	
W6	90x35-MGP10 H0 ADS	JD5	
W7	90x35-MGP10 H0 ADS	JD5	
W8	90x35-MGP10 H0 ADS	JD5	

- 13 more members were not shown -

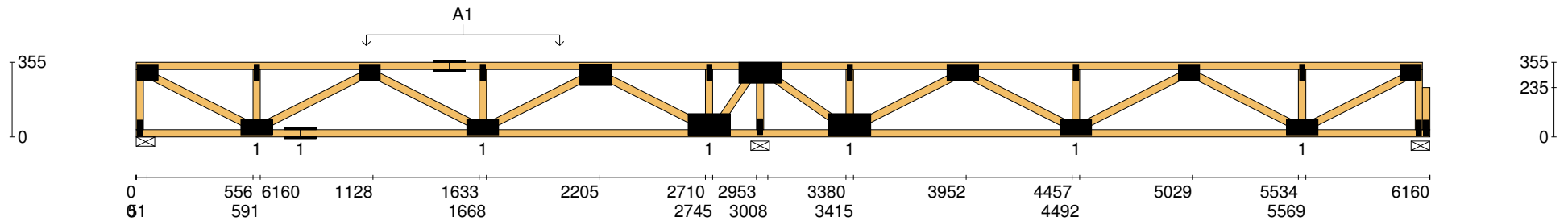
Vertical Reactions at Supports


	S1	S2	S3
1.35DL (kN)	0.51	1.47	0.38
1.2DL + 1.5LL (kN)	2.07	6.57	1.97

Joint	Nail Plate	Joint	Nail Plate
T1	75x100-MN	B5	25x75-MN
BL1	25x75-MN	B6	100x200-MN
B1	75x150-MN	T9	25x75-MN
T2	25x75-MN	T10	75x150-MN
B2	75x150-MN	B7	75x150-MN
T3	75x100-MN	T11	25x75-MN
T4	75x150-MN	T12	75x100-MN
B3	75x150-MN	B8	75x150-MN
T5	25x75-MN	T13	25x75-MN
T6	100x150-MN	BR1	25x75-MN
B4	100x200-MN	T14	75x100-MN
T7	25x75-MN	BR1-1	25x75-MN
T8	100x200-MN		

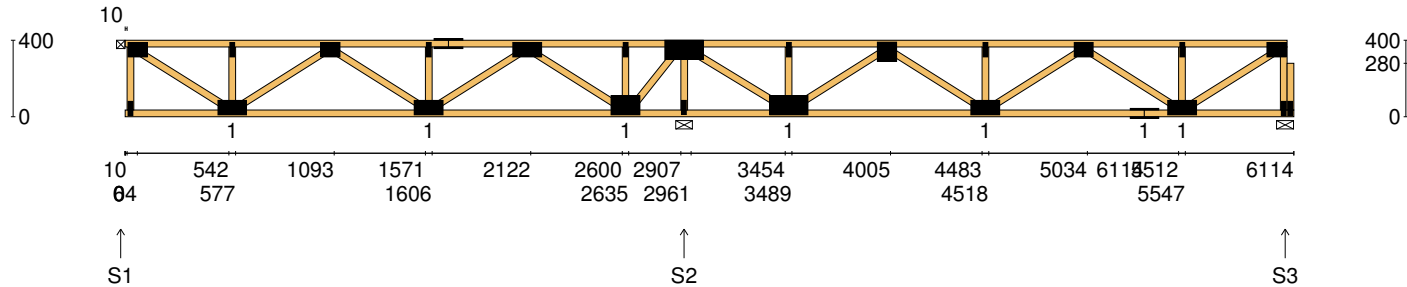
Span: 6160	Floor Material: Particle (15.4 kg/m²)	Application: General Areas	All dimensions in millimetres. This drawing should be read in conjunction with Multinail Technical sheets. Wall plates must be placed at supports only.	016020 (TN-016-020)
Overhang: 0/0	Floor Covering: Std Carpet + Underlay (8 kg/m²)	Live Load: 1.5 kPa		Ver: Floor 1.9.4
Spacing: 600	Ceiling Material: Plaster 10mm Supa Span (8.2 kg/m²)	Point Load: 1.8 kN		Date: 5/12/2018
Quantity: 1	Ceiling Fixing: Metal direct @ 600c	Design: AS 1720.1-2010		Page: 9 of 24

Client: D'ANDREA	Trusstech SA Pty Ltd 16 High St., Dry Creek, SA 5094	Job No: TT02365
Site: 50-52 WINDSOR ST MAGILL SA 5072 AUS		Weight: 37.40 kg
Ref: DWLG 6	Joist Name: FJ6 Type: SJ 355 Joists: FJ11	Total Weight: 37.40 kg
		Laminations: 1



User Def. Load		A1 189.17 kg/m ² WET AREA	
Applied Load			
DL	(kN)		
LL	(kN)		
WL Up	(kN)		
WL Dn	(kN)		
Span:	6160	Floor Material:	Particle (15.4 kg/m²)
Overhang:	0/0	Floor Covering:	Std Carpet + Underlay (8 kg/m²)
Spacing:	600	Ceiling Material:	Plaster 10mm Supa Span (8.2 kg/m²)
Quantity:	1	Ceiling Fixing:	Metal direct @ 600c
		Application:	General Areas
		Live Load:	1.5 kPa
		Point Load:	1.8 kN
		Design:	AS 1720.1-2010
		All dimensions in millimetres. This drawing should be read in conjunction with Multinail Technical sheets. Wall plates must be placed at supports only.	
			
		016020 (TN-016-020)	
		Ver:	Floor 1.9.4
		Date:	5/12/2018
		Page:	10 of 24

Client: D'ANDREA	Trusstech SA Pty Ltd 16 High St., Dry Creek, SA 5094	Job No: TT02365
Site: 50-52 WINDSOR ST MAGILL SA 5072 AUS		Weight: 38.11 kg
Ref: DWLG 6	Joist Name: FJ7 Type: SJ 400 Joists: FJ12	Total Weight: 38.11 kg
		Laminations: 1



TIMBER / PLATES


Member	Size	Plating	Restraint
BC1	90x35-MGP10 H0 ADS	JD5	600
TC1	90x35-MGP10 H0 ADS	JD5	300
LEW1	90x35-MGP10 H0 ADS	JD5	
W1	90x35-MGP10 H0 ADS	JD5	
W2	90x35-MGP10 H0 ADS	JD5	
W3	90x35-MGP10 H0 ADS	JD5	
W4	90x35-MGP10 H0 ADS	JD5	
W5	90x35-MGP10 H0 ADS	JD5	
W6	90x35-MGP10 H0 ADS	JD5	
TC2	90x35-MGP10 H0 ADS	JD5	300
W7	90x35-MGP10 H0 ADS	JD5	
W8	90x35-MGP10 H0 ADS	JD5	
W9	90x35-MGP10 H0 ADS	JD5	

- 13 more members were not shown -

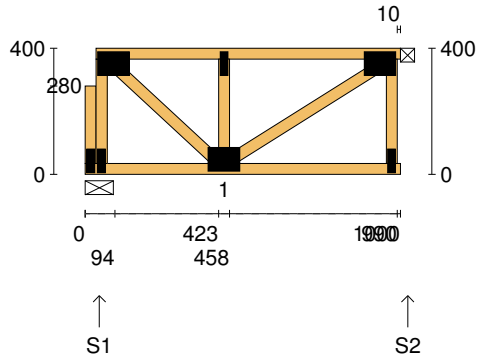
Vertical Reactions at Supports

	S1	S2	S3
1.35DL (kN)	0.36	1.22	0.42
1.2DL + 1.5LL (kN)	1.80	6.09	2.04

Joint	Nail Plate	Joint	Nail Plate
T1	75x100-MN	B5	100x200-MN
BL1	25x75-MN	T9	25x75-MN
B1	75x150-MN	T10	100x100-MN
T2	25x75-MN	B6	75x150-MN
T3	75x100-MN	T11	25x75-MN
B2	75x150-MN	T12	75x100-MN
T4	25x75-MN	B7	75x150-MN
T5	75x150-MN	B8	75x150-MN
T6	75x150-MN	T13	25x75-MN
B3	100x150-MN	BR1	25x75-MN
T7	25x75-MN	T14	75x100-MN
T8	100x200-MN	BR1-1	25x75-MN
B4	25x75-MN		

Span: 6114	Floor Material: Particle (15.4 kg/m²)	Application: General Areas	All dimensions in millimetres. This drawing should be read in conjunction with Multinail Technical sheets. Wall plates must be placed at supports only.	016020 (TN-016-020)
Overhang: 0/0	Floor Covering: Std Carpet + Underlay (8 kg/m²)	Live Load: 1.5 kPa		Ver: Floor 1.9.4
Spacing: 600	Ceiling Material: Plaster 10mm Supa Span (8.2 kg/m²)	Point Load: 1.8 kN		Date: 5/12/2018
Quantity: 1	Ceiling Fixing: Metal direct @ 600c	Design: AS 1720.1-2010		Page: 11 of 24

Client: D'ANDREA	Trusstech SA Pty Ltd 16 High St., Dry Creek, SA 5094 Joist Name: FJ8 Type: SJ 400 Joists: FJ13, FJ14	Job No: TT02365
Site: 50-52 WINDSOR ST MAGILL SA 5072 AUS		Weight: 7.19 kg
Ref: DWLG 6		Total Weight: 14.38 kg
		Laminations: 1



TIMBER / PLATES


Member	Size	Plating	Restraint
BC1	90x35-MGP10 H0 ADS	JD5	600
LBlock1	90x35-MGP10 H0 ADS	JD5	
LEW1	90x35-MGP10 H0 ADS	JD5	
TC1	90x35-MGP10 H0 ADS	JD5	300
W1	90x35-MGP10 H0 ADS	JD5	
W2	90x35-MGP10 H0 ADS	JD5	
W3	90x35-MGP10 H0 ADS	JD5	
REW1	90x35-MGP10 H0 ADS	JD5	

Vertical Reactions at Supports

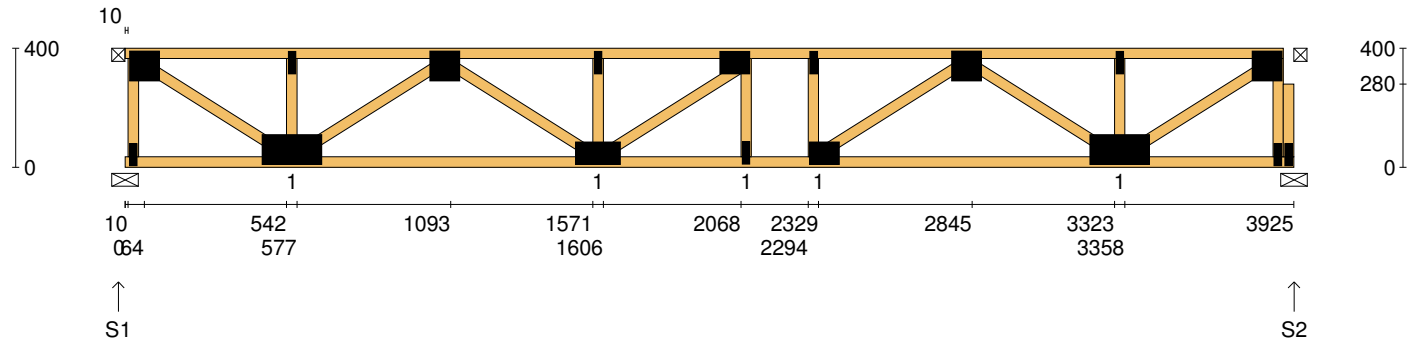
	S1	S2
1.35DL (kN)	0.16	0.16
1.2DL + 1.5LL (kN)	0.77	0.76

Joint Nail Plate

BL1-1	25x75-MN
T1	75x100-MN
BL1	25x75-MN
B1	75x100-MN
T2	25x75-MN
BR1	25x75-MN
T3	75x100-MN

Span: 1000	Floor Material: Particle (15.4 kg/m²)	Application: General Areas	All dimensions in millimetres. This drawing should be read in conjunction with Multinail Technical sheets. Wall plates must be placed at supports only.	016020 (TN-016-020)
Overhang: 0/0	Floor Covering: Std Carpet + Underlay (8 kg/m²)	Live Load: 1.5 kPa		Ver: Floor 1.9.4
Spacing: 600	Ceiling Material: Plaster 10mm Supa Span (8.2 kg/m²)	Point Load: 1.8 kN		Date: 5/12/2018
Quantity: 2	Ceiling Fixing: Metal direct @ 600c	Design: AS 1720.1-2010		Page: 12 of 24

Client: D'ANDREA	Trusstech SA Pty Ltd 16 High St., Dry Creek, SA 5094	Job No: TT02365
Site: 50-52 WINDSOR ST MAGILL SA 5072 AUS		Weight: 24.70 kg
Ref: DWLG 6	Joist Name: FJ9 Type: SJ 400 Joists: FJ15, FJ16	Total Weight: 49.39 kg
		Laminations: 1



TIMBER / PLATES


Member	Size	Plating	Restraint
BC1	90x35-MGP10 H0 ADS	JD5	600
TC1	90x35-MGP10 H0 ADS	JD5	300
LEW1	90x35-MGP10 H0 ADS	JD5	
W1	90x35-MGP10 H0 ADS	JD5	
W2	90x35-MGP10 H0 ADS	JD5	
W3	90x35-MGP10 H0 ADS	JD5	
W4	90x35-MGP10 H0 ADS	JD5	
W5	90x35-MGP10 H0 ADS	JD5	
W6	90x35-MGP10 H0 ADS	JD5	
W7	90x35-MGP10 H0 ADS	JD5	
W8	90x35-MGP10 H0 ADS	JD5	
W9	90x35-MGP10 H0 ADS	JD5	
W10	90x35-MGP10 H0 ADS	JD5	

- 4 more members were not shown -

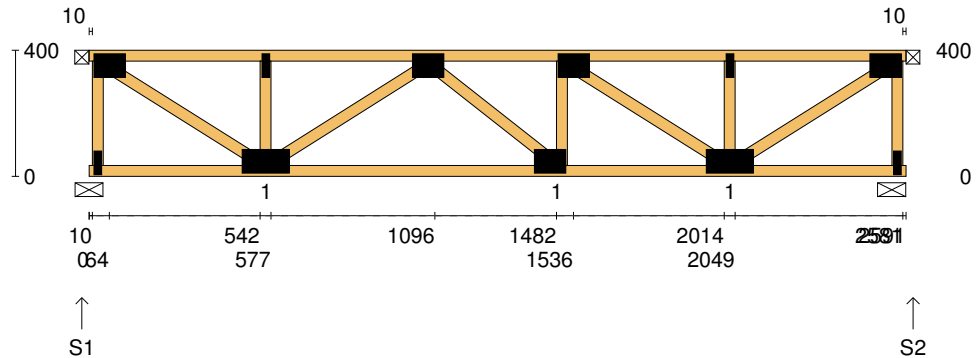
Vertical Reactions at Supports

	S1	S2
1.35DL (kN)	0.64	0.64
1.2DL + 1.5LL (kN)	3.16	3.17

Joint	Nail Plate	Joint	Nail Plate
T1	100x100-MN	T8	25x75-MN
BL1	25x75-MN	BR1	25x75-MN
B1	100x200-MN	T9	100x100-MN
T2	25x75-MN	BR1-1	25x75-MN
T3	100x100-MN		
B2	75x150-MN		
T4	25x75-MN		
T5	75x100-MN		
B3	25x75-MN		
B4	75x100-MN		
T6	25x75-MN		
T7	100x100-MN		
B5	100x200-MN		

Span: 3925	Floor Material: Particle (15.4 kg/m²)	Application: General Areas	All dimensions in millimetres. This drawing should be read in conjunction with Multinail Technical sheets. Wall plates must be placed at supports only.	016020 (TN-016-020)
Overhang: 0/0	Floor Covering: Std Carpet + Underlay (8 kg/m²)	Live Load: 1.5 kPa		Ver: Floor 1.9.4
Spacing: 600	Ceiling Material: Plaster 10mm Supa Span (8.2 kg/m²)	Point Load: 1.8 kN		Date: 5/12/2018
Quantity: 2	Ceiling Fixing: Metal direct @ 600c	Design: AS 1720.1-2010		Page: 13 of 24

Client: D'ANDREA	Trusstech SA Pty Ltd 16 High St., Dry Creek, SA 5094	Job No: TT02365
Site: 50-52 WINDSOR ST MAGILL SA 5072 AUS		Weight: 16.33 kg
Ref: DWLG 6	Joist Name: FJ10 Type: SJ 400 Joists: FJ17	Total Weight: 16.33 kg
		Laminations: 1



TIMBER / PLATES


Member	Size	Plating	Restraint
BC1	90x35-MGP10 H0 ADS	JD5	600
TC1	90x35-MGP10 H0 ADS	JD5	300
LEW1	90x35-MGP10 H0 ADS	JD5	
W1	90x35-MGP10 H0 ADS	JD5	
W2	90x35-MGP10 H0 ADS	JD5	
W3	90x35-MGP10 H0 ADS	JD5	
W4	90x35-MGP10 H0 ADS	JD5	
W5	90x35-MGP10 H0 ADS	JD5	
W6	90x35-MGP10 H0 ADS	JD5	
W7	90x35-MGP10 H0 ADS	JD5	
W8	90x35-MGP10 H0 ADS	JD5	
REW1	90x35-MGP10 H0 ADS	JD5	

Vertical Reactions at Supports

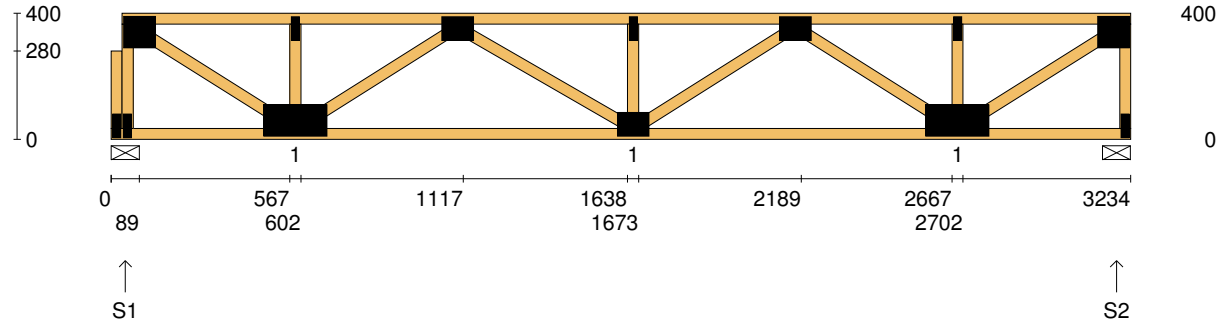
	S1	S2
1.35DL (kN)	0.42	0.43
1.2DL + 1.5LL (kN)	2.09	2.09

Joint Nail Plate

T1	75x100-MN
BL1	25x75-MN
B1	75x150-MN
T2	25x75-MN
T3	75x100-MN
B2	75x100-MN
T4	75x100-MN
B3	75x150-MN
T5	25x75-MN
BR1	25x75-MN
T6	75x100-MN

Span: 2591	Floor Material: Particle (15.4 kg/m²)	Application: General Areas	All dimensions in millimetres. This drawing should be read in conjunction with Multinail Technical sheets. Wall plates must be placed at supports only.	016020 (TN-016-020)
Overhang: 0/0	Floor Covering: Std Carpet + Underlay (8 kg/m²)	Live Load: 1.5 kPa		Ver: Floor 1.9.4
Spacing: 600	Ceiling Material: Plaster 10mm Supa Span (8.2 kg/m²)	Point Load: 1.8 kN		Date: 5/12/2018
Quantity: 1	Ceiling Fixing: Metal direct @ 600c	Design: AS 1720.1-2010		Page: 14 of 24

Client: D'ANDREA	Trusstech SA Pty Ltd 16 High St., Dry Creek, SA 5094 Joist Name: FJ11 Type: SJ 400 Joists: FJ18	Job No: TT02365
Site: 50-52 WINDSOR ST MAGILL SA 5072 AUS		Weight: 20.17 kg
Ref: DWLG 6		Total Weight: 20.17 kg
		Laminations: 1



TIMBER / PLATES

Member	Size	Plating	Restraint
BC1	90x35-MGP10 H0 ADS	JD5	600
LBlock1	90x35-MGP10 H0 ADS	JD5	
LEW1	90x35-MGP10 H0 ADS	JD5	
TC1	90x35-MGP10 H0 ADS	JD5	300
W1	90x35-MGP10 H0 ADS	JD5	
W2	90x35-MGP10 H0 ADS	JD5	
W3	90x35-MGP10 H0 ADS	JD5	
W4	90x35-MGP10 H0 ADS	JD5	
W5	90x35-MGP10 H0 ADS	JD5	
W6	90x35-MGP10 H0 ADS	JD5	
W7	90x35-MGP10 H0 ADS	JD5	
W8	90x35-MGP10 H0 ADS	JD5	
W9	90x35-MGP10 H0 ADS	JD5	


- 1 more member was not shown -

Vertical Reactions at Supports

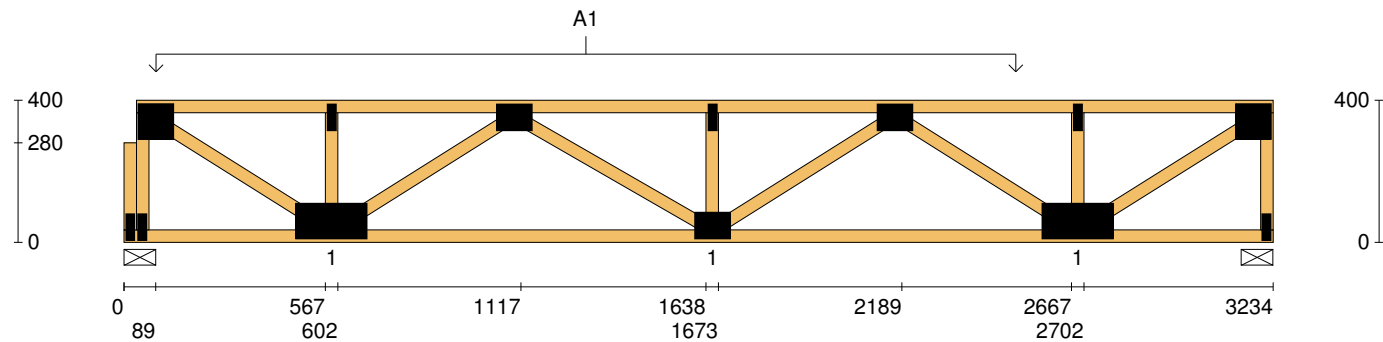
	S1	S2
1.35DL (kN)	0.87	0.75
1.2DL + 1.5LL (kN)	2.91	2.80

Joint Nail Plate

BL1-1	25x75-MN
T1	100x100-MN
BL1	25x75-MN
B1	100x200-MN
T2	25x75-MN
T3	75x100-MN
B2	75x100-MN
T4	25x75-MN
T5	75x100-MN
B3	100x200-MN
T6	25x75-MN
BR1	25x75-MN
T7	100x100-MN


Span: 3234	Floor Material: Particle (15.4 kg/m²)	Application: General Areas	All dimensions in millimetres. This drawing should be read in conjunction with Multinail Technical sheets. Wall plates must be placed at supports only.	016020 (TN-016-020)
Overhang: 0/0	Floor Covering: Std Carpet + Underlay (8 kg/m²)	Live Load: 1.5 kPa		Ver: Floor 1.9.4
Spacing: 600	Ceiling Material: Plaster 10mm Supa Span (8.2 kg/m²)	Point Load: 1.8 kN		Date: 5/12/2018
Quantity: 1	Ceiling Fixing: Metal direct @ 600c	Design: AS 1720.1-2010		Page: 15 of 24

Client: D'ANDREA	Trusstech SA Pty Ltd 16 High St., Dry Creek, SA 5094	Job No: TT02365
Site: 50-52 WINDSOR ST MAGILL SA 5072 AUS		Weight: 20.17 kg
Ref: DWLG 6	Joist Name: FJ11 Type: SJ 400 Joists: FJ18	Total Weight: 20.17 kg
		Laminations: 1

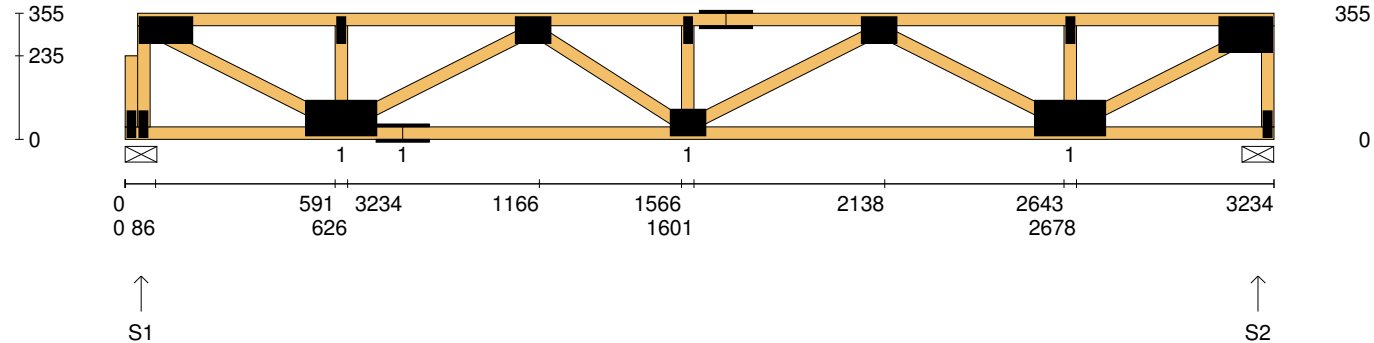


User Def. Load	A1 53.00 kg/m ² WET AREA
-----------------------	---

Applied Load	
DL (kN)	
LL (kN)	
WL Up (kN)	
WL Dn (kN)	

Span: 3234	Floor Material: Particle (15.4 kg/m²)	Application: General Areas	All dimensions in millimetres. This drawing should be read in conjunction with Multinail Technical sheets. Wall plates must be placed at supports only.	016020 (TN-016-020)
Overhang: 0/0	Floor Covering: Std Carpet + Underlay (8 kg/m²)	Live Load: 1.5 kPa		Ver: Floor 1.9.4
Spacing: 600	Ceiling Material: Plaster 10mm Supa Span (8.2 kg/m²)	Point Load: 1.8 kN		Date: 5/12/2018
Quantity: 1	Ceiling Fixing: Metal direct @ 600c	Design: AS 1720.1-2010		Page: 16 of 24

Client: D'ANDREA	Trusstech SA Pty Ltd 16 High St., Dry Creek, SA 5094	Job No: TT02365
Site: 50-52 WINDSOR ST MAGILL SA 5072 AUS		Weight: 20.05 kg
Ref: DWLG 6	Joist Name: FJ12 Type: SJ 355 Joists: FJ19	Total Weight: 20.05 kg
		Laminations: 1



TIMBER / PLATES


Member	Size	Plating	Restraint
BC1	90x35-MGP10 H0 ADS	JD5	600
LBlock1	90x35-MGP10 H0 ADS	JD5	
LEW1	90x35-MGP10 H0 ADS	JD5	
TC1	90x35-MGP10 H0 ADS	JD5	300
W1	90x35-MGP10 H0 ADS	JD5	
W2	90x35-MGP10 H0 ADS	JD5	
W3	90x35-MGP10 H0 ADS	JD5	
BC2	90x35-MGP10 H0 ADS	JD5	600
W4	90x35-MGP10 H0 ADS	JD5	
W5	90x35-MGP10 H0 ADS	JD5	
W6	90x35-MGP10 H0 ADS	JD5	
TC2	90x35-MGP10 H0 ADS	JD5	300
W7	90x35-MGP10 H0 ADS	JD5	

- 3 more members were not shown -

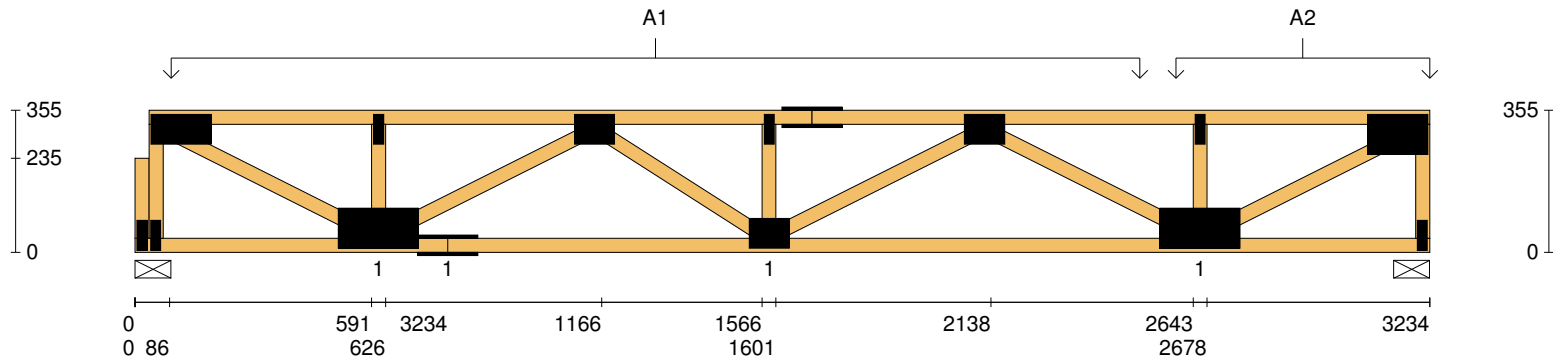
Vertical Reactions at Supports

	S1	S2
1.35DL (kN)	0.89	0.96
1.2DL + 1.5LL (kN)	2.95	3.16

Joint	Nail Plate	Joint	Nail Plate
BL1-1	25x75-MN	BR1	25x75-MN
T1	75x150-MN	T8	100x150-MN
BL1	25x75-MN		
B1	100x200-MN		
T2	25x75-MN		
B2	75x150-MN		
T3	75x100-MN		
B3	75x100-MN		
T4	25x75-MN		
T5	75x150-MN		
T6	75x100-MN		
B4	100x200-MN		
T7	25x75-MN		


Span: 3234	Floor Material: Particle (15.4 kg/m²)	Application: General Areas	All dimensions in millimetres. This drawing should be read in conjunction with Multinail Technical sheets. Wall plates must be placed at supports only.	016020 (TN-016-020)
Overhang: 0/0	Floor Covering: Std Carpet + Underlay (8 kg/m²)	Live Load: 1.5 kPa		Ver: Floor 1.9.4
Spacing: 600	Ceiling Material: Plaster 10mm Supa Span (8.2 kg/m²)	Point Load: 1.8 kN		Date: 5/12/2018
Quantity: 1	Ceiling Fixing: Metal direct @ 600c	Design: AS 1720.1-2010		Page: 17 of 24

Client: D'ANDREA	Trusstech SA Pty Ltd 16 High St., Dry Creek, SA 5094	Job No: TT02365
Site: 50-52 WINDSOR ST MAGILL SA 5072 AUS		Weight: 20.05 kg
Ref: DWLG 6	Joist Name: FJ12 Type: SJ 355 Joists: FJ19	Total Weight: 20.05 kg
		Laminations: 1

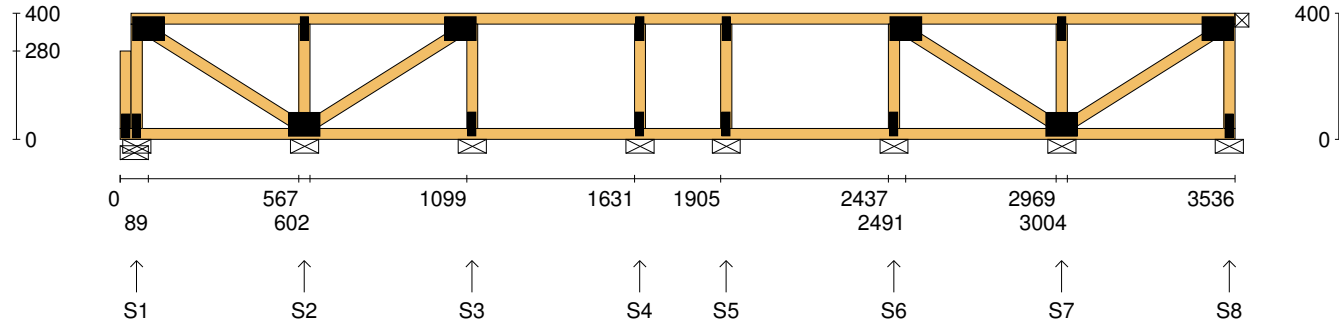


User Def. Load	A1	A2
	53.00 kg/m ²	189.17 kg/m ²
	WET AREA	WET AREA

Applied Load	
DL	(kN)
LL	(kN)
WL Up	(kN)
WL Dn	(kN)

Span:	3234	Floor Material:	Particle (15.4 kg/m²)	Application:	General Areas	All dimensions in millimetres. This drawing should be read in conjunction with Multinail Technical sheets. Wall plates must be placed at supports only.	016020 (TN-016-020)
Overhang:	0/0	Floor Covering:	Std Carpet + Underlay (8 kg/m²)	Live Load:	1.5 kPa		Ver: Floor 1.9.4
Spacing:	600	Ceiling Material:	Plaster 10mm Supa Span (8.2 kg/m²)	Point Load:	1.8 kN		Date: 5/12/2018
Quantity:	1	Ceiling Fixing:	Metal direct @ 600c	Design:	AS 1720.1-2010		Page: 18 of 24

Client: D'ANDREA	Trusstech SA Pty Ltd 16 High St., Dry Creek, SA 5094 Joist Name: FJ13 Type: SJ 400 Ladder Joists: FJ21	Job No: TT02365
Site: 50-52 WINDSOR ST MAGILL SA 5072 AUS		Weight: 20.40 kg
Ref: DWLG 6		Total Weight: 20.40 kg
		Laminations: 1



TIMBER / PLATES


Member	Size	Plating	Restraint
BC1	90x35-MGP10 H0 ADS	JD5	600
LBlock1	90x35-MGP10 H0 ADS	JD5	
LEW1	90x35-MGP10 H0 ADS	JD5	
TC1	90x35-MGP10 H0 ADS	JD5	300
W1	90x35-MGP10 H0 ADS	JD5	
W2	90x35-MGP10 H0 ADS	JD5	
W3	90x35-MGP10 H0 ADS	JD5	
W4	90x35-MGP10 H0 ADS	JD5	
W5	90x35-MGP10 H0 ADS	JD5	
W6	90x35-MGP10 H0 ADS	JD5	
W7	90x35-MGP10 H0 ADS	JD5	
W8	90x35-MGP10 H0 ADS	JD5	
W9	90x35-MGP10 H0 ADS	JD5	

- 2 more members were not shown -

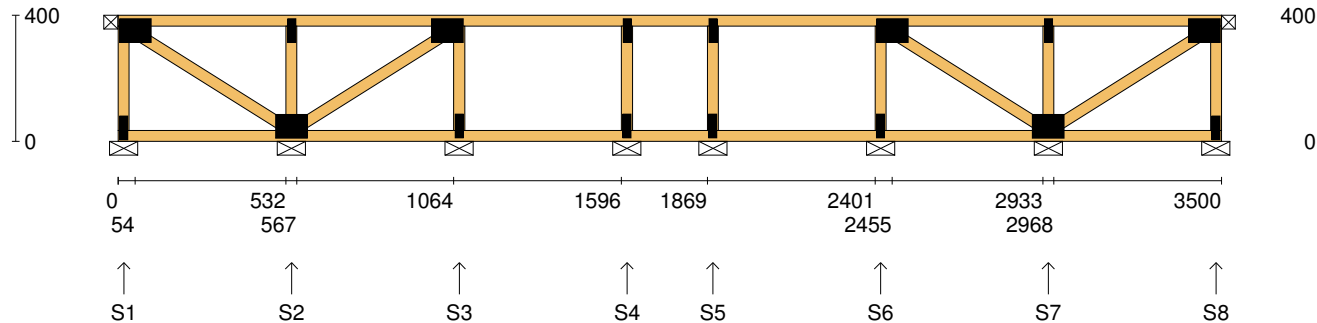
Vertical Reactions at Supports

	S1	S2	S3	S4	S5	S6	S7	S8
1.35DL (kN)	0.07	0.22	0.16	0.12	0.12	0.16	0.22	0.07
1.2DL + 1.5LL (kN)	0.31	1.11	0.80	0.63	0.63	0.80	1.11	0.30

Joint	Nail Plate	Joint	Nail Plate
BL1-1	25x75-MN	B6	75x100-MN
T1	75x100-MN	T7	25x75-MN
BL1	25x75-MN	BR1	25x75-MN
B1	75x100-MN	T8	75x100-MN
T2	25x75-MN		
T3	75x100-MN		
B2	25x75-MN		
T4	25x75-MN		
B3	25x75-MN		
T5	25x75-MN		
B4	25x75-MN		
T6	75x100-MN		
B5	25x75-MN		

Span: 3536	Floor Material: Particle (15.4 kg/m²)	Application: General Areas	All dimensions in millimetres. This drawing should be read in conjunction with Multinail Technical sheets. Wall plates must be placed at supports only.	016020 (TN-016-020)
Overhang: 0/0	Floor Covering: Std Carpet + Underlay (8 kg/m²)	Live Load: 1.5 kPa		Ver: Floor 1.9.4
Spacing: 600	Ceiling Material: Plaster 10mm Supa Span (8.2 kg/m²)	Point Load: 1.8 kN		Date: 5/12/2018
Quantity: 1	Ceiling Fixing: Metal direct @ 600c	Design: AS 1720.1-2010		Page: 19 of 24

Client: D'ANDREA	Trusstech SA Pty Ltd 16 High St., Dry Creek, SA 5094 Joist Name: FJ14 Type: SJ 400 Ladder Joists: FJ22	Job No: TT02365
Site: 50-52 WINDSOR ST MAGILL SA 5072 AUS		Weight: 19.92 kg
Ref: DWL G 6		Total Weight: 19.92 kg Laminations: 1



TIMBER / PLATES


Member	Size	Plating	Restraint
BC1	90x35-MGP10 H0 ADS	JD5	600
LEW1	90x35-MGP10 H0 ADS	JD5	
TC1	90x35-MGP10 H0 ADS	JD5	300
W1	90x35-MGP10 H0 ADS	JD5	
W2	90x35-MGP10 H0 ADS	JD5	
W3	90x35-MGP10 H0 ADS	JD5	
W4	90x35-MGP10 H0 ADS	JD5	
W5	90x35-MGP10 H0 ADS	JD5	
W6	90x35-MGP10 H0 ADS	JD5	
W7	90x35-MGP10 H0 ADS	JD5	
W8	90x35-MGP10 H0 ADS	JD5	
W9	90x35-MGP10 H0 ADS	JD5	
W10	90x35-MGP10 H0 ADS	JD5	

- 1 more member was not shown -

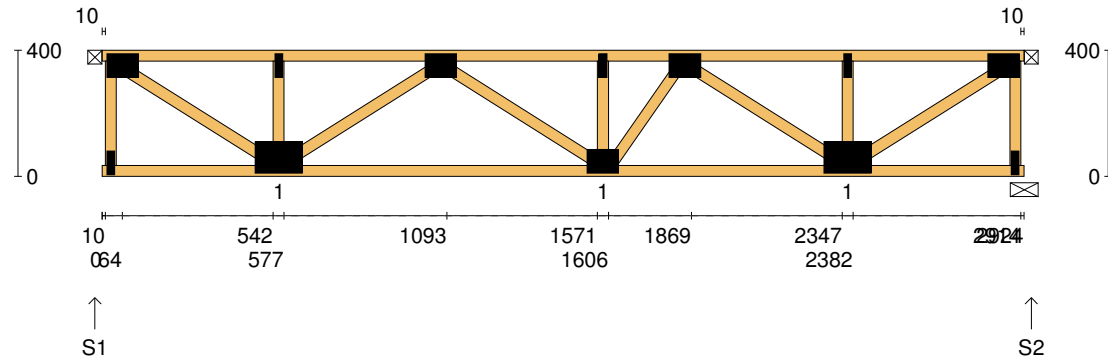
Vertical Reactions at Supports

	S1	S2	S3	S4	S5	S6	S7	S8
1.35DL (kN)	0.07	0.22	0.16	0.12	0.12	0.16	0.22	0.07
1.2DL + 1.5LL (kN)	0.30	1.11	0.80	0.63	0.63	0.80	1.11	0.30

Joint	Nail Plate	Joint	Nail Plate
T1	75x100-MN	T7	25x75-MN
BL1	25x75-MN	BR1	25x75-MN
B1	75x100-MN	T8	75x100-MN
T2	25x75-MN		
T3	75x100-MN		
B2	25x75-MN		
T4	25x75-MN		
B3	25x75-MN		
T5	25x75-MN		
B4	25x75-MN		
T6	75x100-MN		
B5	25x75-MN		
B6	75x100-MN		

Span: 3500	Floor Material: Particle (15.4 kg/m²)	Application: General Areas	All dimensions in millimetres. This drawing should be read in conjunction with Multinail Technical sheets. Wall plates must be placed at supports only.	016020 (TN-016-020)
Overhang: 0/0	Floor Covering: Std Carpet + Underlay (8 kg/m²)	Live Load: 1.5 kPa		Ver: Floor 1.9.4
Spacing: 600	Ceiling Material: Plaster 10mm Supa Span (8.2 kg/m²)	Point Load: 1.8 kN		Date: 5/12/2018
Quantity: 1	Ceiling Fixing: Metal direct @ 600c	Design: AS 1720.1-2010		Page: 20 of 24

Client: D'ANDREA	Trusstech SA Pty Ltd 16 High St., Dry Creek, SA 5094	Job No: TT02365
Site: 50-52 WINDSOR ST MAGILL SA 5072 AUS		Weight: 18.24 kg
Ref: DWLG 6	Joist Name: FJ15 Type: SJ 400 Joists: FJ23, FJ24	Total Weight: 36.48 kg
		Laminations: 1



TIMBER / PLATES


Member	Size	Plating	Restraint
BC1	90x35-MGP10 H0 ADS	JD5	600
TC1	90x35-MGP10 H0 ADS	JD5	300
LEW1	90x35-MGP10 H0 ADS	JD5	
W1	90x35-MGP10 H0 ADS	JD5	
W2	90x35-MGP10 H0 ADS	JD5	
W3	90x35-MGP10 H0 ADS	JD5	
W4	90x35-MGP10 H0 ADS	JD5	
W5	90x35-MGP10 H0 ADS	JD5	
W6	90x35-MGP10 H0 ADS	JD5	
W7	90x35-MGP10 H0 ADS	JD5	
W8	90x35-MGP10 H0 ADS	JD5	
W9	90x35-MGP10 H0 ADS	JD5	
REW1	90x35-MGP10 H0 ADS	JD5	

Vertical Reactions at Supports

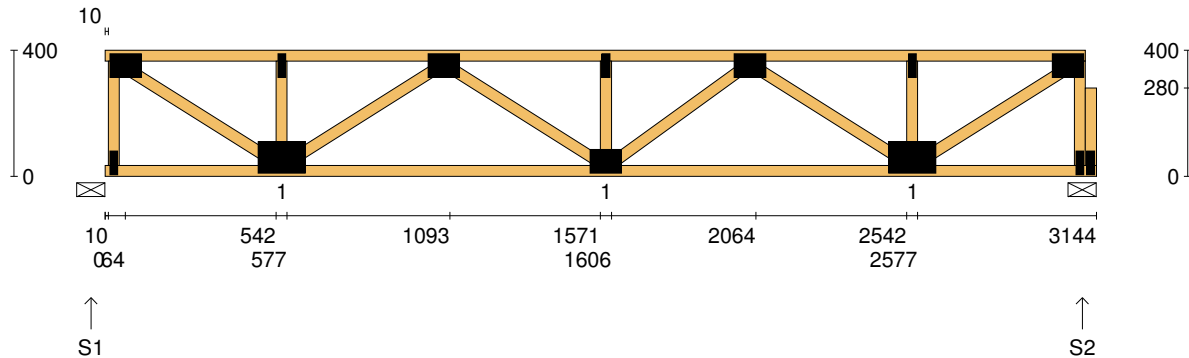
	S1	S2
1.35DL (kN)	0.48	0.48
1.2DL + 1.5LL (kN)	2.36	2.36

Joint Nail Plate

T1	75x100-MN
BL1	25x75-MN
B1	100x150-MN
T2	25x75-MN
T3	75x100-MN
B2	75x100-MN
T4	25x75-MN
T5	75x100-MN
B3	100x150-MN
T6	25x75-MN
BR1	25x75-MN
T7	75x100-MN

Span: 2924	Floor Material: Particle (15.4 kg/m²)	Application: General Areas	All dimensions in millimetres. This drawing should be read in conjunction with Multinail Technical sheets. Wall plates must be placed at supports only.	016020 (TN-016-020)
Overhang: 0/0	Floor Covering: Std Carpet + Underlay (8 kg/m²)	Live Load: 1.5 kPa		Ver: Floor 1.9.4
Spacing: 600	Ceiling Material: Plaster 10mm Supa Span (8.2 kg/m²)	Point Load: 1.8 kN		Date: 5/12/2018
Quantity: 2	Ceiling Fixing: Metal direct @ 600c	Design: AS 1720.1-2010		Page: 21 of 24

Client: D'ANDREA	Trusstech SA Pty Ltd 16 High St., Dry Creek, SA 5094 Joist Name: FJ16 Type: SJ 400 Joists: FJ25, FJ26	Job No: TT02365
Site: 50-52 WINDSOR ST MAGILL SA 5072 AUS		Weight: 19.52 kg
Ref: DWLG 6		Total Weight: 39.04 kg
		Laminations: 1



TIMBER / PLATES

Member	Size	Plating	Restraint
BC1	90x35-MGP10 H0 ADS	JD5	600
TC1	90x35-MGP10 H0 ADS	JD5	300
LEW1	90x35-MGP10 H0 ADS	JD5	
W1	90x35-MGP10 H0 ADS	JD5	
W2	90x35-MGP10 H0 ADS	JD5	
W3	90x35-MGP10 H0 ADS	JD5	
W4	90x35-MGP10 H0 ADS	JD5	
W5	90x35-MGP10 H0 ADS	JD5	
W6	90x35-MGP10 H0 ADS	JD5	
W7	90x35-MGP10 H0 ADS	JD5	
W8	90x35-MGP10 H0 ADS	JD5	
W9	90x35-MGP10 H0 ADS	JD5	
REW1	90x35-MGP10 H0 ADS	JD5	


- 1 more member was not shown -

Vertical Reactions at Supports

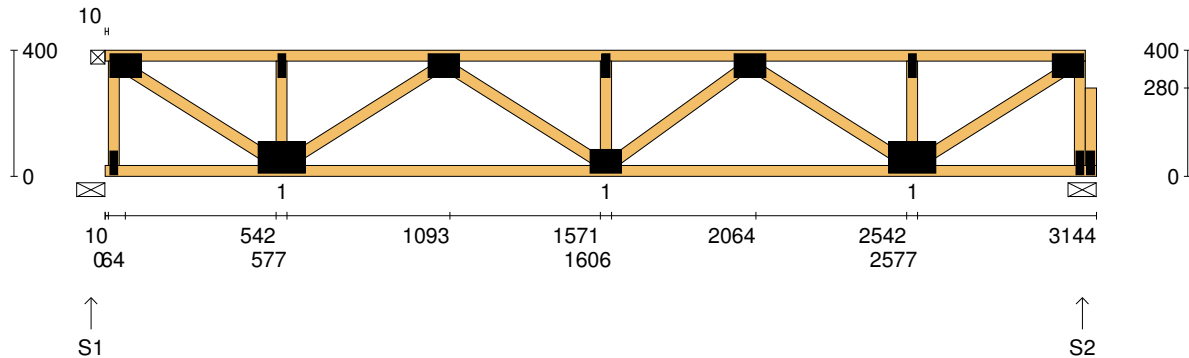
	S1	S2
1.35DL (kN)	0.51	0.51
1.2DL + 1.5LL (kN)	2.52	2.53

Joint Nail Plate

T1	75x100-MN
BL1	25x75-MN
B1	100x150-MN
T2	25x75-MN
T3	75x100-MN
B2	75x100-MN
T4	25x75-MN
T5	75x100-MN
B3	100x150-MN
T6	25x75-MN
BR1	25x75-MN
T7	75x100-MN
BR1-1	25x75-MN

Span: 3144	Floor Material: Particle (15.4 kg/m²)	Application: General Areas	All dimensions in millimetres. This drawing should be read in conjunction with Multinail Technical sheets. Wall plates must be placed at supports only.	016020 (TN-016-020)
Overhang: 0/0	Floor Covering: Std Carpet + Underlay (8 kg/m²)	Live Load: 1.5 kPa		Ver: Floor 1.9.4
Spacing: 600	Ceiling Material: Plaster 10mm Supa Span (8.2 kg/m²)	Point Load: 1.8 kN		Date: 5/12/2018
Quantity: 2	Ceiling Fixing: Metal direct @ 600c	Design: AS 1720.1-2010		Page: 22 of 24

Client: D'ANDREA	Trusstech SA Pty Ltd 16 High St., Dry Creek, SA 5094 Joist Name: FJ17 Type: SJ 400 Joists: FJ27, FJ28	Job No: TT02365
Site: 50-52 WINDSOR ST MAGILL SA 5072 AUS		Weight: 19.52 kg
Ref: DWLG 6		Total Weight: 39.04 kg
		Laminations: 1



TIMBER / PLATES

Member	Size	Plating	Restraint
BC1	90x35-MGP10 H0 ADS	JD5	600
TC1	90x35-MGP10 H0 ADS	JD5	300
LEW1	90x35-MGP10 H0 ADS	JD5	
W1	90x35-MGP10 H0 ADS	JD5	
W2	90x35-MGP10 H0 ADS	JD5	
W3	90x35-MGP10 H0 ADS	JD5	
W4	90x35-MGP10 H0 ADS	JD5	
W5	90x35-MGP10 H0 ADS	JD5	
W6	90x35-MGP10 H0 ADS	JD5	
W7	90x35-MGP10 H0 ADS	JD5	
W8	90x35-MGP10 H0 ADS	JD5	
W9	90x35-MGP10 H0 ADS	JD5	
REW1	90x35-MGP10 H0 ADS	JD5	


- 1 more member was not shown -

Vertical Reactions at Supports

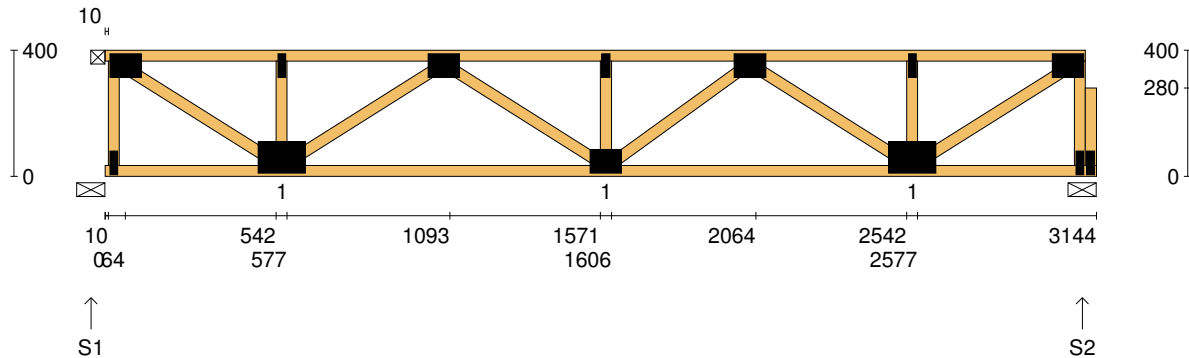
	S1	S2
1.35DL (kN)	0.51	0.51
1.2DL + 1.5LL (kN)	2.52	2.53

Joint Nail Plate

T1	75x100-MN
BL1	25x75-MN
B1	100x150-MN
T2	25x75-MN
T3	75x100-MN
B2	75x100-MN
T4	25x75-MN
T5	75x100-MN
B3	100x150-MN
T6	25x75-MN
BR1	25x75-MN
T7	75x100-MN
BR1-1	25x75-MN

Span: 3144	Floor Material: Particle (15.4 kg/m²)	Application: General Areas	All dimensions in millimetres. This drawing should be read in conjunction with Multinail Technical sheets. Wall plates must be placed at supports only.	016020 (TN-016-020)
Overhang: 0/0	Floor Covering: Std Carpet + Underlay (8 kg/m²)	Live Load: 1.5 kPa		Ver: Floor 1.9.4
Spacing: 600	Ceiling Material: Plaster 10mm Supa Span (8.2 kg/m²)	Point Load: 1.8 kN		Date: 5/12/2018
Quantity: 2	Ceiling Fixing: Metal direct @ 600c	Design: AS 1720.1-2010		Page: 23 of 24

Client: D'ANDREA	Trusstech SA Pty Ltd 16 High St., Dry Creek, SA 5094 Joist Name: FJ18 Type: SJ 400 Joists: FJ29, FJ30	Job No: TT02365
Site: 50-52 WINDSOR ST MAGILL SA 5072 AUS		Weight: 19.52 kg
Ref: DWLG 6		Total Weight: 39.04 kg
		Laminations: 1



TIMBER / PLATES

Member	Size	Plating	Restraint
BC1	90x35-MGP10 H0 ADS	JD5	600
TC1	90x35-MGP10 H0 ADS	JD5	300
LEW1	90x35-MGP10 H0 ADS	JD5	
W1	90x35-MGP10 H0 ADS	JD5	
W2	90x35-MGP10 H0 ADS	JD5	
W3	90x35-MGP10 H0 ADS	JD5	
W4	90x35-MGP10 H0 ADS	JD5	
W5	90x35-MGP10 H0 ADS	JD5	
W6	90x35-MGP10 H0 ADS	JD5	
W7	90x35-MGP10 H0 ADS	JD5	
W8	90x35-MGP10 H0 ADS	JD5	
W9	90x35-MGP10 H0 ADS	JD5	
REW1	90x35-MGP10 H0 ADS	JD5	


- 1 more member was not shown -

Vertical Reactions at Supports

	S1	S2
1.35DL (kN)	0.51	0.51
1.2DL + 1.5LL (kN)	2.52	2.53

Joint Nail Plate

T1	75x100-MN
BL1	25x75-MN
B1	100x150-MN
T2	25x75-MN
T3	75x100-MN
B2	75x100-MN
T4	25x75-MN
T5	75x100-MN
B3	100x150-MN
T6	25x75-MN
BR1	25x75-MN
T7	75x100-MN
BR1-1	25x75-MN

Span: 3144	Floor Material: Particle (15.4 kg/m²)	Application: General Areas	All dimensions in millimetres. This drawing should be read in conjunction with Multinail Technical sheets. Wall plates must be placed at supports only.	016020 (TN-016-020)
Overhang: 0/0	Floor Covering: Std Carpet + Underlay (8 kg/m²)	Live Load: 1.5 kPa		Ver: Floor 1.9.4
Spacing: 600	Ceiling Material: Plaster 10mm Supa Span (8.2 kg/m²)	Point Load: 1.8 kN		Date: 5/12/2018
Quantity: 2	Ceiling Fixing: Metal direct @ 600c	Design: AS 1720.1-2010		Page: 24 of 24